



9th GENERATION

STAINLESS STEEL
EVAPORATIVE CONDENSERS

MORE COST EFFECTIVE
WITH WORLD CLASS QUALITY

www.heataway.net



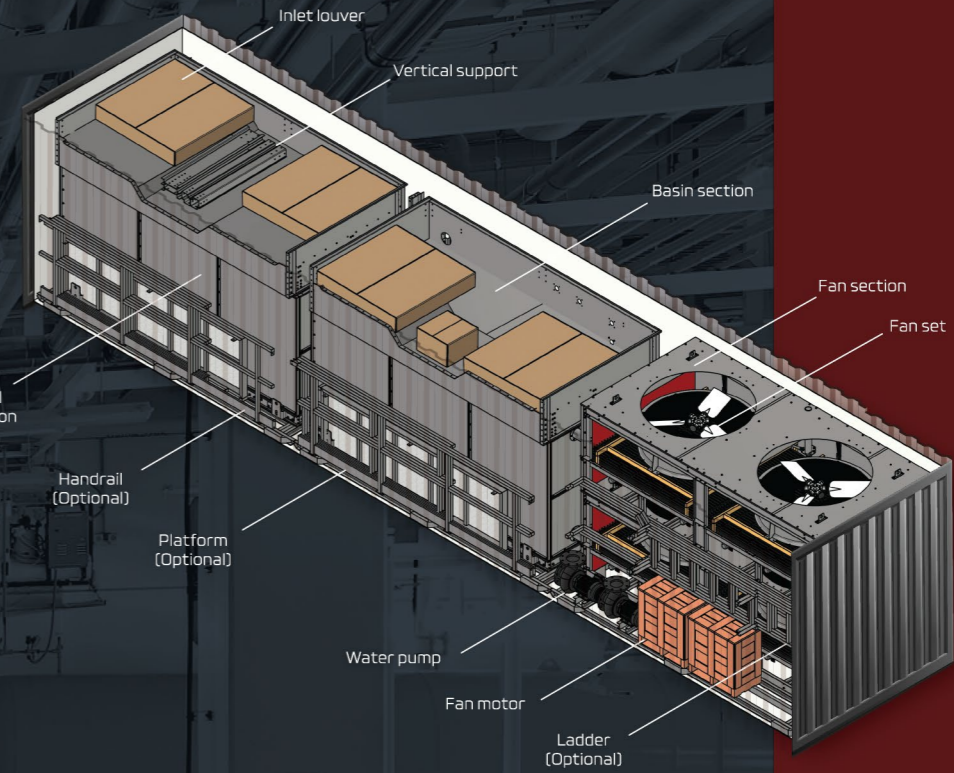
CONTAINERIZED



EC9
SERIES

LOWEST
SHIPPING
COST

4x CHEAPER
ALL CONTAINERIZED MODEL
UP TO 3900 kW



EASIER TO REPLACE
WITH COMPATIBLE FOOTPRINT

EC9 SERIES HAS BEEN DESIGNED TO MATCH THE MOST WIDELY USED FOOTPRINT TO AVOID SPACE ISSUES AND FOUNDATION MODIFICATION COSTS INCLUDING REDUCED WORKING TIME AT SITE.



EASIER
FIELD
ASSEMBLY

WITH ONE-DAY KNOCK-DOWN UNIT

STAINLESS STEEL WITH QUALITY BASED ON ASME STANDARDS

OUR COIL IS DESIGNED WITH STAINLESS STEEL
WHICH IS SPECIFIED FOR CONDENSER TUBES
IN ACCORDANCE WITH ASME STANDARDS.

OUR SOURCES OF THIS KEY MATERIAL ARE AMONG
THE TOP OF THE INDUSTRY. WHILE OTHER GRADES
MAY LOOK THE SAME AND ARE EVEN APPLICABLE,
WE STICK TO OUR COMMITMENT OF MAKING
LONG LASTING CONDENSERS.

NOT ANY STAINLESS STEEL CAN BE A CONDENSER



PROVEN FIELD TEST

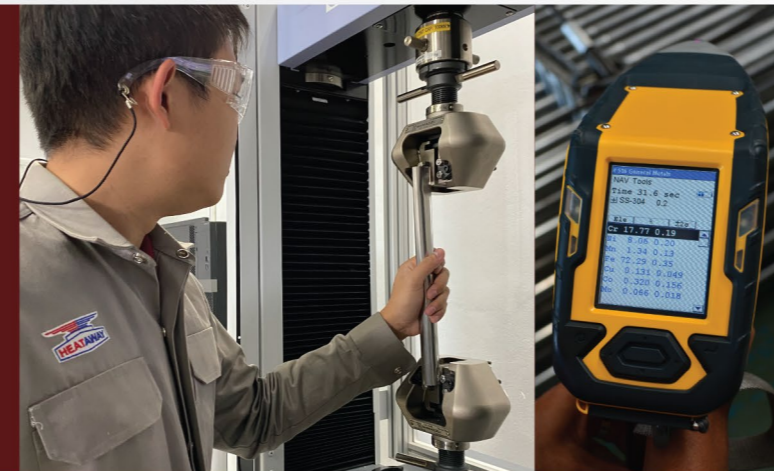


PERFORMANCE RELIABILITY

PERFORMANCE RATINGS ARE BASED ON
TEST PROCEDURE CTI ATC-106,
ACCEPTANCE TEST CODE FOR MECHANICAL
DRAFT EVAPORATIVE VAPOR CONDENSERS

ALL STAINLESS STEEL GRADES LOOK THE SAME. HOW CAN YOU BE 100% SURE YOU GET THE SPECIFICATION IN ACCORDANCE WITH ASME STANDARD ?

WE ASK THE SAME QUESTION AND THAT IS WHY WE INVESTED IN OUR
POSITIVE MATERIAL IDENTIFICATION MACHINE (PMI). THE MACHINE CAN TELL THE EXACT
CHEMICAL COMPOSITION AND ONLY THE MATERIAL PASSING ITS TEST CAN BE MADE INTO COILS.
WE ALSO HAVE IN-HOUSE TESTING FACILITIES THAT CAN PERFORM ASME REQUIRED TESTING PROCEDURE.



STAY EFFICIENT PREVENT BREAKDOWN WITHIN 30 MINS

SPRAY NOZZLES AND BRANCHES CAN BE EASILY REMOVED, CLEANED AND REASSEMBLED FROM OUTSIDE WITHIN 30 MINUTES*.

WATER-SPRAY MUST BE CLEANED AT LEAST ONCE A MONTH TO PREVENT NOZZLE CLOGGING THAT CAN LEAD TO DECREASED EFFICIENCY AND COIL LEAKAGE.



BLEED RATE CALCULATION

Model	EC9-3500
Condensing temperature	38 °C
Wet-bulb temperature	28 °C



	Make up	Max	
Hardness as CaCO ₃	25	300	ppm
Chlorides as Cl	19	250	ppm
Total dissolved solids	220	900	ppm

Heat rejection capacity	2671	kW
Min. Cycles of concentration	8.2	
Bleed rate	0.58	m ³ /hr



BLEED RATE CALCULATION ON CLOUD



EXTEND YOUR PRODUCT LIFETIME WITH PROPER BLEED RATE

SUBSTANDARD WATER CAN DAMAGE STAINLESS STEEL DESPITE ITS ANTI-CORROSION PROPERTIES. THEREFORE, BLEED-OFF NEED TO BE SET AT PROPER RATE AND VERIFIED REGULARLY.



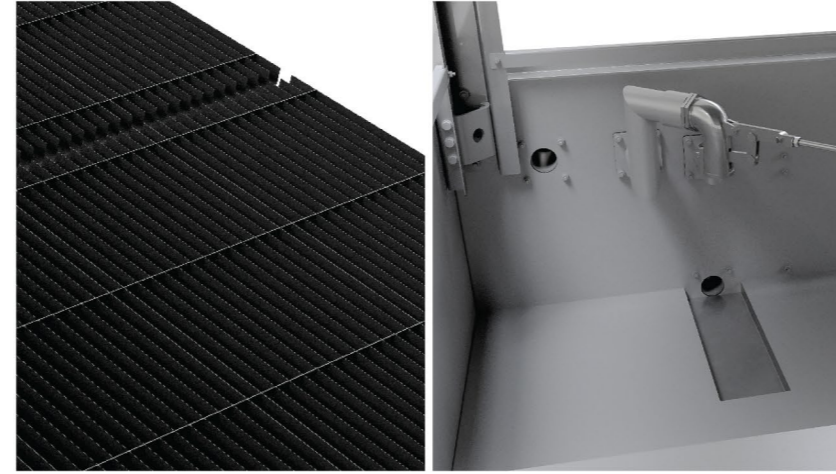
Chloride level (ppm)	Bleed-valve opening	Chloride level (ppm)	Bleed-valve opening
0 - 32	1 1/2	215 - 229	3
33 - 79	1 3/4	230 - 237	3 1/4
80 - 137	2	238 - 242	3 1/2
138 - 169	2 1/4	243 - 255	4
170 - 191	2 1/2	256 - 258	5
192 - 214	2 3/4	259 - 265	6

COMPLIANCE STANDARD



ASME B31.5
STAINLESS STEEL CONDENSER COIL

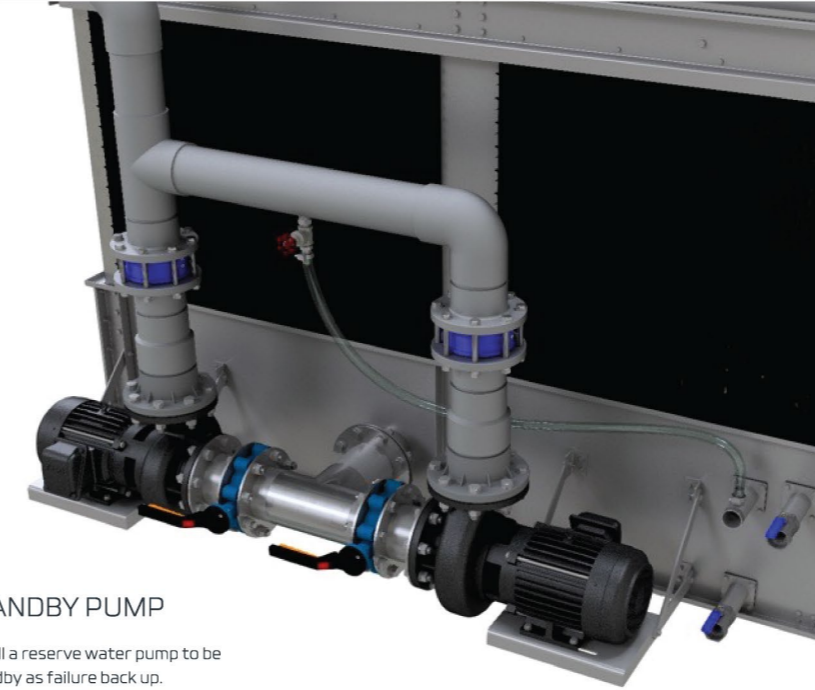
Made of 304 stainless and comply with ASME B31.5.



CTI ATC-140 DRIFT TEST
AIR HANDLING AND WATER SYSTEM

Drift loss of eliminators are certified by EUROVENT, and water system are designed to be compliance with AS/NZS 3666.1.

ADDITIONAL EQUIPMENT



STANDBY PUMP

Install a reserve water pump to be standby as failure back up.



STAINLESS STEEL
ACCESS

Come with platform, handrail, ladder including cage. Made of 304 stainless steel.



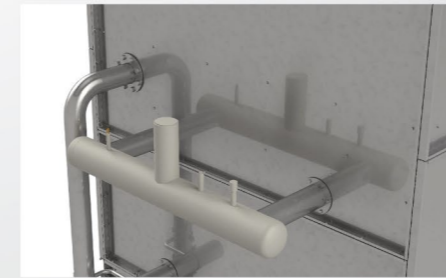
IEC 60034-2-1
FAN & PUMP MOTOR

For energy saving, fan and water motors are provided with IEC standard.



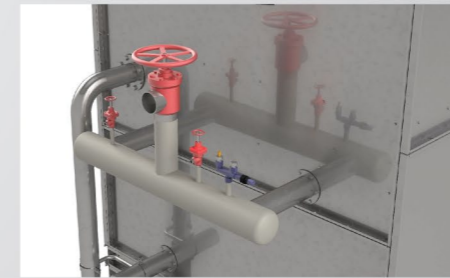
OSHA STANDARD (FIXED PLATFORMS AND LADDERS)
STAINLESS STEEL ACCESS EQUIPMENT

Platform, handrail, and ladder are designed in accordance with OSHA standard.



HOT GAS HEADER*

Reduce welding on-site to save installation cost. 2 material options with A53 carbon steel and 304 stainless steel.



HOT GAS HEADER W/ VALVE*

Come with a stop valve at inlet, purge and equalizer including 3-way valve for connecting safety valve. There are 2 material options: A53 carbon steel and 304 stainless steel.



AUXILIARY COOLING CIRCUIT

Install auxiliary coil configurations available to allow separate process fluid loops through the same unit. Mostly used with water. There 2 options: Single-layer and double-layer.

*Note: Available for model size 8'x9', 8'x12', 8'x18' only

HEATAWAY

WORLD CLASS QUALITY

HEATAWAY CO., LTD.

135 M.7, Khlong Preng, Mueang Chachoengsao,
Chachoengsao, Thailand, 24000

Tel. +66(0) 38-088708
E-mail: sales@heataway.net

